



Gold
asianplus
We take care

asianplus electricals pvt. ltd.

AN ISO 9001-2015 CERTIFIED COMPANY



ARIHANT
GROUP OF BUSINESS

**A Premium
Modular Range**

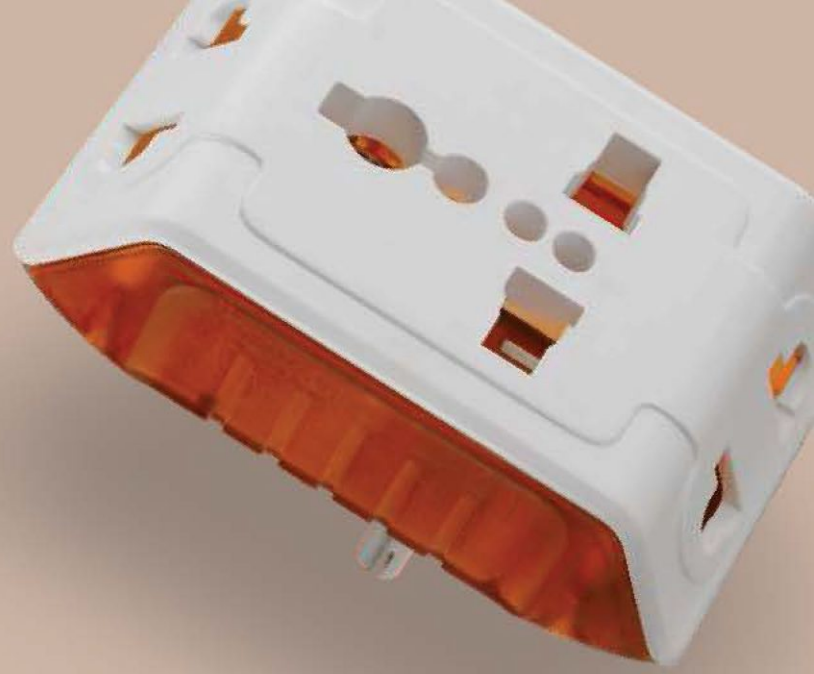




About Us

Gold asianplus Switches & Accessories, A brand which you can trust for its Good Quality, Products & Services We are a Manufacturers of Electronic Accessories **Gold asianplus** Group is known in the industry as the largest manufacturers of electronic products. A key focus area is a company's impact to the environment Sustainable products are those products that provide environmental, social and economic benefits while protecting public health & environment over their whole life cycle, from the extraction of raw materials until the final disposal. Our products help preserve the environment by significantly reducing the pollution We always believe in new innovation with n expansion We have good experienced hands with us.





Our Vision

In A World Where Technology Is Increasingly Touches Every Aspect Of Our Daily Lives, We Will Be The Leading Solution Provider In The Areas Of Electronics & Technology, Aspiring To Become The Most Admired Company



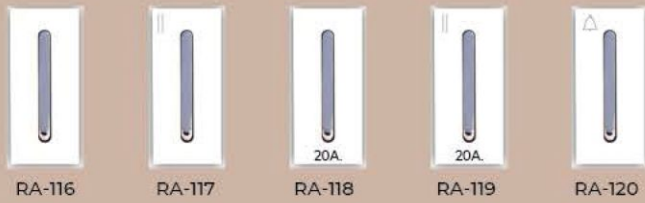
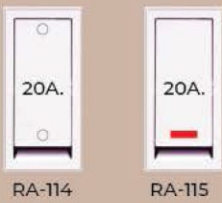
Art

Art is a diverse range of human activities in creating visual, auditory or performing artifacts expressing the author's imaginative, conceptual ideas, or technical skill, intended to be appreciated for their beauty or emotional power.

Experience a perfect world



The **solution** that
you have **dreamed**



RA-126



RA-127

| CODE | DESCRIPTION | MRP (White) | MRP (Black-Grey) | PKG |
|------|-------------|-------------|------------------|-----|
|------|-------------|-------------|------------------|-----|

6A / 20A SWITCHES - ROCKER 1 MODULE

| | | | | |
|--------|--------------------------------|-------|-------|----|
| RA-101 | 6A. 1WAY SWITCH | 42.00 | 55.00 | 20 |
| RA-102 | 6A. 2WAY SWITCH | 56.00 | 63.00 | 20 |
| RA-103 | 10A. BELL PUSH SWITCH | 50.00 | 57.00 | 20 |
| RA-104 | 6A. 1WAY SWITCH AND IND. | 63.00 | 70.00 | 20 |
| RA-105 | 6A. BELL PUSH SWITCH WITH IND. | 69.00 | 75.00 | 20 |
| RA-106 | 20A. 1WAY SWITCH | 69.00 | 76.00 | 20 |
| RA-107 | 20A. 2WAY SWITCH | 84.00 | 91.00 | 20 |
| RA-108 | 20A. 1WAY SWITCH WITH IND. | 90.00 | 97.00 | 20 |

6A./20A. FLATE SWITCHES

| | | | | |
|--------|---------------------------------|-------|-------|----|
| RA-109 | 10A. 1WAY SWITCH | 56.00 | 63.00 | 20 |
| RA-110 | 10A. 2WAY SWITCH | 61.00 | 68.00 | 20 |
| RA-111 | 10A. BELL PUSH SWITCH | 76.00 | 83.00 | 20 |
| RA-112 | 10A. BELL PUSH SWITCH WITH IND. | 88.00 | 90.00 | 20 |
| RA-113 | 20A. 1WAY SWITCH | 80.00 | 87.00 | 20 |
| RA-114 | 20A. 2WAY SWITCH | 87.00 | 95.00 | 20 |
| RA-115 | 20A. 1WAY SWITCH WITH IND. | 92.00 | 99.00 | 20 |

6A / 20A SWITCHES - CROME 1 MODULE

| | | | | |
|--------|-----------------------|--------|--------|----|
| RA-116 | 10A. 1WAY SWITCH | 53.34 | 60.34 | 20 |
| RA-117 | 10A. 2WAY SWITCH | 73.34 | 81.34 | 20 |
| RA-118 | 20A. 1WAY SWITCH | 100.00 | 110.00 | 20 |
| RA-119 | 20A. 2WAY SWITCH | 116.68 | 125.00 | 20 |
| RA-120 | 10A. BELL PUSH SWITCH | 66.67 | 75.67 | 20 |

6A / 20A SWITCHES - SEGA 1 MODULE

| | | | | |
|--------|-----------------------|-------|-------|----|
| RA-121 | 10A. 1WAY SWITCH | 43.34 | 50.34 | 20 |
| RA-122 | 10A. 2WAY SWITCH | 66.67 | 73.67 | 20 |
| RA-123 | 10A. BELL PUSH SWITCH | 86.67 | 94.67 | 20 |
| RA-124 | 20A. 1WAY SWITCH | 86.67 | 95.67 | 20 |
| RA-125 | 20A. 2WAY SWITCH | 90.00 | 98.00 | 20 |

10A / 20A SWITCHES - PORCELAIN 1 MODULE

| | | | | |
|--------|------------------|--------|--------|----|
| RA-126 | 10A. 1WAY SWITCH | 90.00 | 100.00 | 20 |
| RA-127 | 20A. 1WAY SWITCH | 116.00 | 126.00 | 20 |



RA-128

RA-129

RA-130



RA-131

RA-132



RA-133

RA-134

RA-135



RA-136

RA-137

RA-138



RA-139

RA-140

RA-141



RA-142

RA-143



RA-144

RA-145

RA-146

RA-147

| CODE | DESCRIPTION | MRP (White) | MRP (Black-Grey) | PKG |
|------|-------------|-------------|------------------|-----|
|------|-------------|-------------|------------------|-----|

6A./20A. SWITCHES - ROUND 2 MODULE

| | | | | |
|--------|---------------------------------|--------|--------|----|
| RA-128 | 10A. 1WAY SWITCH | 116.67 | 126.67 | 10 |
| RA-129 | 10A. 2WAY SWITCH | 150.00 | 162.00 | 10 |
| RA-130 | 10A. BELL PUSH SWITCH WITH IND. | 140.00 | 155.00 | 10 |
| RA-131 | 20A. 1WAY SWITCH | 183.34 | 195.34 | 10 |
| RA-132 | 20A. 2WAY SWITCH | 200.00 | 215.00 | 10 |

6A./20A. DURA SWITCHES -2MODULE

| | | | | |
|--------|----------------------------|--------|--------|----|
| RA-133 | 10A. 1WAY SWITCH | 84.00 | 86.00 | 10 |
| RA-134 | 10A. 2WAY SWITCH | 98.00 | 110.00 | 10 |
| RA-135 | 10A. BELL PUSH SWITCH | 89.00 | 101.00 | 10 |
| RA-136 | 20A. 1WAY SWITCH | 109.00 | 122.00 | 10 |
| RA-137 | 20A. 2WAY SWITCH | 120.00 | 135.00 | 10 |
| RA-138 | 32A. D.P. SWITCH WITH IND. | 222.00 | 235.00 | 10 |

6A./10A./20A./25A. SOCKET

| | | | | |
|--------|------------------------------------|--------|--------|----|
| RA-139 | 6A. 3PIN SOCKET | 60.00 | 68.00 | 10 |
| RA-140 | 6A. SOCKET | 60.00 | 100.00 | 10 |
| RA-141 | 10A. MULTI SOCKET WITH SHUTTER | 89.00 | 92.00 | 10 |
| RA-142 | 6A. /16A. UNI. SOCKET WITH SHUTTER | 135.00 | 145.00 | 10 |
| RA-143 | 6A. /13A. INTEL SOCKET 2M | 130.00 | 142.00 | 10 |

COMMUNACATION MODULES

| | | | | |
|--------|----------------------------|--------|--------|----|
| RA-144 | USB CHARGER | 601.00 | 630.00 | 20 |
| RA-145 | BLANK PLATE | 14.00 | 20.00 | 20 |
| RA-146 | INDICATOR | 65.00 | 77.00 | 20 |
| RA-147 | FANCY INDICATOR WITH BRASS | 75.00 | 85.00 | 20 |



| CODE | DESCRIPTION | MRP (White) | MRP (Black-Grey) | PKG |
|------|-------------|-------------|------------------|-----|
|------|-------------|-------------|------------------|-----|

MODULER MCB

| | | | | |
|--------|----------------------|--------|--------|----|
| RA-148 | 06A. SINGLE POLE MCB | 186.00 | 196.00 | 10 |
| RA-149 | 10A. SINGLE POLE MCB | 186.00 | 196.00 | 10 |
| RA-150 | 16A. SINGLE POLE MCB | 186.00 | 196.00 | 10 |
| RA-151 | 20A. SINGLE POLE MCB | 186.00 | 196.00 | 10 |
| RA-152 | 25A. SINGLE POLE MCB | 186.00 | 196.00 | 10 |
| RA-153 | 32A. SINGLE POLE MCB | 186.00 | 196.00 | 10 |
| RA-154 | 06A. DOUBLE POLE MCB | 396.00 | 416.00 | 10 |
| RA-155 | 10A. DOUBLE POLE MCB | 396.00 | 416.00 | 10 |
| RA-156 | 16A. DOUBLE POLE MCB | 396.00 | 416.00 | 10 |
| RA-157 | 20A. DOUBLE POLE MCB | 396.00 | 416.00 | 10 |
| RA-158 | 25A. DOUBLE POLE MCB | 396.00 | 416.00 | 10 |
| RA-159 | 32A. DOUBLE POLE MCB | 396.00 | 416.00 | 10 |

DIMMER & REGULATOR

| | | | | |
|--------|-----------------------------|--------|--------|----|
| RA-160 | 4 STEP FAN REGULATOR -RD 1M | 203.00 | 224.00 | 10 |
| RA-161 | 5 STEP FAN REGULATOR -RD 2M | 335.00 | 360.00 | 10 |
| RA-162 | 4 STEP FAN REGULATOR -RX 1M | 298.00 | 318.00 | 10 |
| RA-163 | 5 STEP FAN REGULATOR -RX 2M | 335.00 | 360.00 | 10 |
| RA-164 | 4 STEP FAN REGULATOR -CX 1M | 203.00 | 224.00 | 10 |
| RA-165 | 5 STEP FAN REGULATOR -CX 1M | 335.00 | 360.00 | 10 |

LED LIGHT

| | | | | |
|--------|-----------------------------------|--------|---------|----|
| RA-166 | 32A. D.P. SWITCH WITH KEY TAG | 445.00 | 470.00 | 10 |
| RA-167 | 4M LED FOOT LIGHT LX | 260.00 | 288.00 | 10 |
| RA-168 | 4M LED FOOT LIGHT WITH SCENERY DX | 260.00 | 288.00 | 10 |
| RA-169 | 4M LED FOOT LIGHT CRYSTAL | 260.00 | 2288.00 | 10 |
| RA-170 | 3M LED FOOT LIGHT CRYSTAL | 260.00 | 288.00 | 10 |
| RA-171 | H314 MODEL | 260.00 | 288.00 | 10 |





Gold
asianplus
We take care



EXPERIENCE RELIABILITY QUALITY

We work closely with our customers, ensuring that the task or project is completed on time and on budget, using the highest quality products available. We also advise our customers of any cost saving measure that can be utilized and can assist with any safety requirements. By using our skills and experience we build ongoing and lasting relationships with our customers.





NEXO
MODULAR SERIES



GLASSO Modular Plate

| MODULE | 2 M | 3 M | 4 M | 6 M | 8 MSQ. | 8 MHZ. | 12 M | 16 M | 18 M |
|--------|--------|--------|--------|--------|---------|---------|---------|---------|---------|
| CODE | RA-191 | RA-192 | RA-193 | RA-194 | RA-195 | RA-196 | RA-197 | RA-198 | RA-199 |
| RATE | 584.00 | 667.00 | 834.00 | 917.00 | 1167.00 | 1167.00 | 1334.00 | 1500.00 | 1734.00 |
| Pkg. | 10 | 10 | 10 | 10 | 10 | 10 | 10 | 05 | 05 |



Carvo

MODULAR SERIES

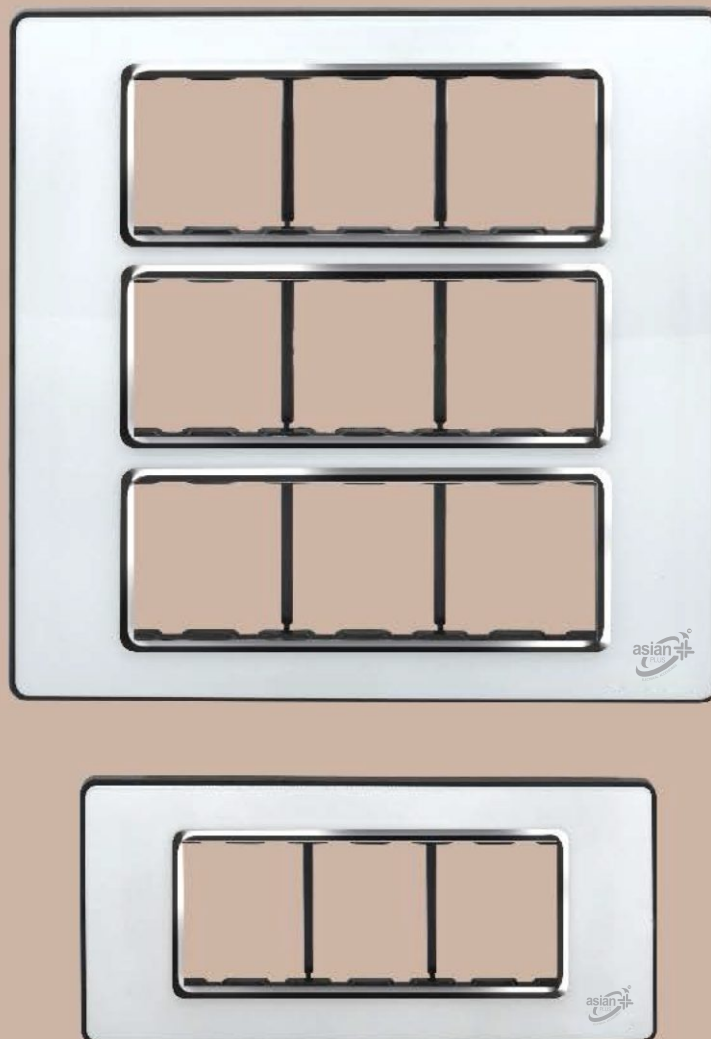


For Your
Every Moment
Experiences
Living

GLASSY
MODULAR SERIES



quantity
not important
quality must



GLASSY Modular Plate

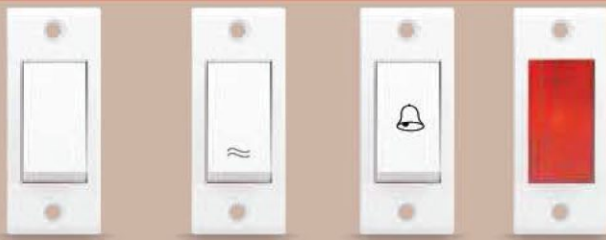
| MODULE | 2 M | 3 M | 4 M | 6 M | 8 MSQ. | 8 MHZ. | 12 M | 16 M | 18 M |
|--------|--------|--------|--------|--------|---------|---------|---------|---------|---------|
| CODE | RA-210 | RA-211 | RA-212 | RA-213 | RA-214 | RA-215 | RA-216 | RA-217 | RA-218 |
| RATE | 584.00 | 667.00 | 834.00 | 917.00 | 1167.00 | 1167.00 | 1334.00 | 1500.00 | 1734.00 |
| Pkg. | 10 | 10 | 10 | 10 | 10 | 10 | 10 | 05 | 05 |





Gold
asianplus
We take care



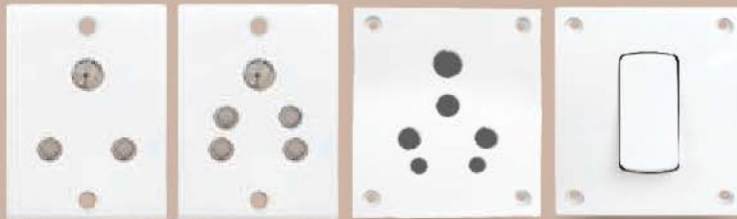


RA-219

RA-220

RA-221

RA-222

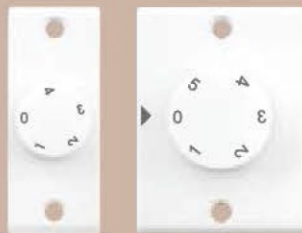


RA-223

RA-224

RA-225

RA-226



RA-227

RA-228



RA-229



RA-230



RA-231



RA-232



RA-233



RA-234

| CODE | DESCRIPTION | MRP | PKG |
|-------------------------------------|----------------|-------|--------|
| 6A GOLD SWITCHES / INDICATOR | | | |
| RA-219 | 1 WAY SWITCH | 30.00 | 20 Pcs |
| RA-220 | 2 WAY SWITCH | 41.67 | 20 Pcs |
| RA-221 | BELL PUSH | 31.67 | 20 Pcs |
| RA-222 | NEON INDICATOR | 50.00 | 20 Pcs |

| CODE | DESCRIPTION | MRP | PKG |
|----------------------------------|-------------------|--------|--------|
| 6A 2 PIN 2 IN ONE SOCKETS | | | |
| RA-223 | 3PIN SOCKET | 50.00 | 10 Pcs |
| RA-224 | 2 IN 1 ONE SOCKET | 50.00 | 10 Pcs |
| RA-225 | 16A. SOCKET | 116.67 | 10 Pcs |
| RA-226 | 20A. SWITCH | 100.00 | 10 Pcs |

| CODE | DESCRIPTION | MRP | PKG |
|----------------------|----------------------|--------|--------|
| FAN REGULATOR | | | |
| RA-227 | 4 STEP FAN REGULATOR | 173.33 | 10 Pcs |
| RA-228 | 5 STEP FAN REGULATOR | 256.67 | 10 Pcs |

| CODE | DESCRIPTION | MRP | PKG |
|----------------------------------|--|--------|--------|
| 32A. SURFACE DP / COMBINE | | | |
| RA-229 | 32A SURFACE D.P. SWITCH | 233.34 | 05 Pcs |
| RA-230 | 16A 3 IN 1 COMBINE WITH BOX | 216.67 | 05 Pcs |
| RA-231 | 6 & 16A. 5 IN 1 COMBINED WITH JUNCTION BOX | 300.00 | 05 Pcs |
| RA-232 | 6 & 16A DOUBLE S. S. COMBINED WITH IND. & JUNCTION BOX | 366.67 | 05 Pcs |

| CODE | DESCRIPTION | MRP | PKG |
|------------------------------------|---------------|-------|--------|
| BED SWITCH / DING DONG BELL | | | |
| RA-233 | BED SWITCH | 33.33 | 20 Pcs |
| RA-234 | BED BELL PUSH | 36.67 | 20 Pcs |



It's art which you need to learn and draft

Uniformity in design hasn't lost its charm. The sophisticated brings consistency with a contemporary creative form.



PENTA SERIES



RA-235



RA-236



RA-237



RA-238



RA-239



RA-240



RA-241



RA-242



RA-243



RA-244

| CODE | DESCRIPTION | MRP | PKG |
|------|-------------|-----|-----|
|------|-------------|-----|-----|

PVC HOLDER

| | | | |
|--------|-------------------|-------|--------|
| RA-235 | PVC BATTEN HOLDER | 30.00 | 20 Pcs |
| RA-236 | PVC ANGEL HOLDER | 30.00 | 20 Pcs |

RING HOLDER

| | | | |
|--------|--------------------|-------|--------|
| RA-237 | RING BATTEN HOLDER | 31.67 | 20 Pcs |
| RA-238 | RING ANGEL HOLDER | 31.67 | 20 Pcs |

RED & WHITE HOLDER

| | | | |
|--------|---------------------------|-------|--------|
| RA-239 | RED & WHITE ANGEL HOLDER | 36.67 | 20 Pcs |
| RA-240 | RED & WHITE BATTEN HOLDER | 36.67 | 20 Pcs |

GOLD HOLDER

| | | | |
|--------|--------------------|-------|--------|
| RA-241 | GOLD BATTEN HOLDER | 42.50 | 20 Pcs |
| RA-242 | GOLD ANGEL HOLDER | 42.50 | 20 Pcs |

ROSE HOLDER

| | | | |
|--------|--------------------|-------|--------|
| RA-243 | ROSE BATTEN HOLDER | 46.67 | 20 Pcs |
| RA-244 | ROSE ANGEL HOLDER | 46.67 | 20 Pcs |

PENTA SERIES



RA-245



RA-246



RA-247



RA-248



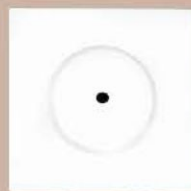
RA-249



RA-250



RA-251



RA-252



RA-253



RA-254

| CODE | DESCRIPTION | MRP | KG |
|------|-------------|-----|----|
|------|-------------|-----|----|

APPLE HOLDER

| | | | |
|--------|---------------------|-------|--------|
| RA-245 | APPLE BATTEN HOLDER | 43.33 | 20 Pcs |
| RA-246 | APPLE ANGEL HOLDER | 43.33 | 20 Pcs |

POLO 5X5 HOLDER

| | | | |
|--------|------------------------|-------|--------|
| RA-247 | POLO 5X5 ANGEL HOLDER | 76.67 | 10 Pcs |
| RA-248 | POLO 5X5 BATTEN HOLDER | 76.67 | 10 Pcs |

POLO 4X4 HOLDER

| | | | |
|--------|------------------------|-------|--------|
| RA-249 | POLO 4X4 ANGEL HOLDER | 66.67 | 10 Pcs |
| RA-250 | POLO 4X4 BATTEN HOLDER | 66.67 | 10 Pcs |

POLO CEILLING ROSE

| | | | |
|--------|--------------------------|-------|--------|
| RA-251 | POLO 4X4 CEILLING HOLDER | 50.00 | 20 Pcs |
| RA-252 | POLO 5X5 CEILLING HOLDER | 73.33 | 20 Pcs |

CEILLING ROSE

| | | | |
|--------|---------------------|-------|--------|
| RA-253 | CEILLING ROSE MINI | 25.83 | 20 Pcs |
| RA-254 | CEILLING ROSE JUMBO | 31.67 | 15 Pcs |

PENTA SERIES



RA-255



RA-256



RA-257



RA-258



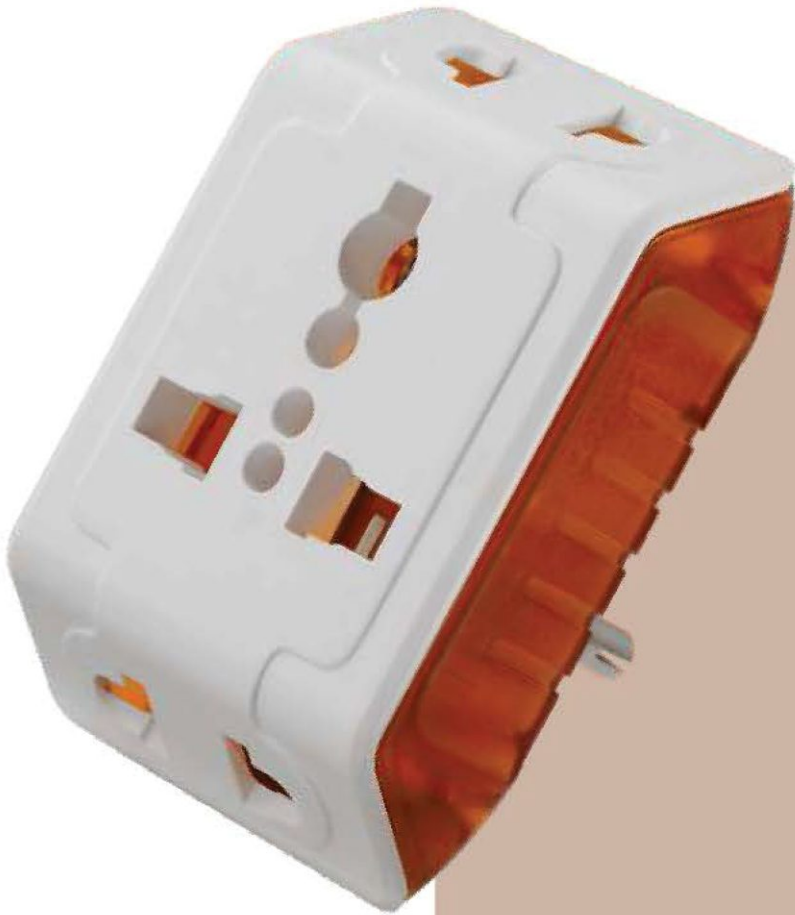
RA-259

| CODE | DESCRIPTION | MRP | PKG |
|---------------------------------|------------------------------|-------|--------|
| PENDENT HOLDER / ADAPTOR | | | |
| RA-255 | MINI PENDENT HOLDER | 24.17 | 20 Pcs |
| RA-256 | JUMBO PENDENT HOLDER (RED) | 25.83 | 20 Pcs |
| RA-257 | JUMBO PENDENT HOLDER (WHITE) | 25.00 | 20 Pcs |
| RA-258 | ADAPTOR | 18.83 | 30 Pcs |
| RA-259 | MULTI PENDENT HOLDER | 32.50 | 20 Pcs |

Our tradition
is **innovation**



PENTA
SERIES



PENTA
SERIES

Accessories
& More

 **Gold
asianplus**
We take care



PENTA SERIES



RA-260



RA-261



RA-262



RA-263



RA-264



RA-265



RA-266



RA-267



RA-268



RA-269



RA-270



RA-271



RA-272



RA-273



RA-274



RA-275



RA-276

| CODE | DESCRIPTION | MRP | PKG |
|------|-------------|-----|-----|
|------|-------------|-----|-----|

2 PIN TOP

| | | | |
|--------|--------------------|-------|--------|
| RA-260 | 2 PIN 2 PART | 15.00 | 30 Pcs |
| RA-261 | 2 PIN 3 PART | 20.00 | 30 Pcs |
| RA-262 | MALE FEMALE 3 PART | 38.33 | 30 Pcs |
| RA-263 | MALE FEMALE 2 PART | 30.00 | 30 Pcs |

3 PIN TOP

| | | | |
|--------|--------------------------|--------|--------|
| RA-264 | 6A 3 PIN TOP FANCY | 56.67 | 20 Pcs |
| RA-265 | 16A 3 PIN TOP FANCY | 90.00 | 20 Pcs |
| RA-266 | 6A 3 PIN TOP | 56.67 | 20 Pcs |
| RA-267 | 16A 3 PIN TOP | 90.00 | 20 Pcs |
| RA-268 | 6A 3 PIN TOP WITH INDI. | 80.00 | 20 Pcs |
| RA-269 | 16A 3 PIN TOP WITH INDI. | 123.33 | 20 Pcs |

MULTI PLUG

| | | | |
|--------|-----------------------------|-------|--------|
| RA-270 | 6A 3 PIN MULTI PLUG | 56.67 | 20 Pcs |
| RA-271 | 10A 5 PIN MULTI PLUG | 73.33 | 20 Pcs |
| RA-272 | 10A. FANCY 3 PIN MULTI PLUG | 73.33 | 20 Pcs |
| RA-273 | 6/16A. MULTI PLUG | 73.33 | 20 Pcs |

SQURE BOX / FAN SHEET

| | | | |
|--------|-------------|-------|--------|
| RA-274 | SQURE BOX | 15.00 | 48 Pcs |
| RA-275 | ROUND SHEET | 05.00 | 40 Pcs |
| RA-276 | FAN SHEET | 18.33 | 20 Pcs |



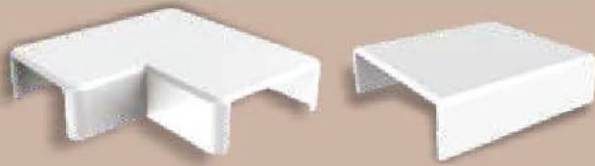
Gold
asianplus
We take care



phisticated brings consistency with a conteThe somporary creative form.
The prominent and distinguished design character brings fine
solutions to the contemporary world.

PENTA

MODULAR SERIES



RA-277

RA-278



RA-279



RA-280



RA-281



RA-282



RA-283



RA-284



RA-285



| CODE | DESCRIPTION | MRP | PKG |
|------|-------------|-----|-----|
|------|-------------|-----|-----|

PUSE FIT FOR CASING & CAPING

| | | | |
|--------|-------------------------|-------|---------|
| RA-277 | ELBOW (1 inch) | 03.67 | 100 Pcs |
| RA-278 | COUPLER (1 inch) | 03.67 | 100 Pcs |
| RA-279 | EXTERNAL ANGEL (1 inch) | 03.67 | 100 Pcs |
| RA-280 | INTERNAL ANGEL (1 inch) | 03.67 | 100 Pcs |
| RA-281 | TEE (1 inch) | 03.67 | 100 Pcs |

JUNCTION BOX

| | | | |
|--------|--------------------|-------|--------|
| RA-282 | 1 WAY JUNCTION BOX | 17.50 | 18 Pcs |
| RA-283 | 2 WAY JUNCTION BOX | 17.50 | 18 Pcs |
| RA-284 | 3 WAY JUNCTION BOX | 17.50 | 18 Pcs |
| RA-285 | 4 WAY JUNCTION BOX | 17.50 | 18 Pcs |

MCB BOX & CHANGE OVER SWITCH

| | | | |
|--------|-----------------|--------|--------|
| RA-286 | 2X4 MCB BOX | 400.00 | 01 Pcs |
| RA-287 | 6X8 MCB BOX | 533.00 | 01 Pcs |
| RA-288 | 10X12 MCB BOX | 650.00 | 01 Pcs |
| RA-289 | 16X18 MCB BOX | 833.00 | 01 Pcs |
| RA-290 | 1/2 WAY MCB BOX | 46.67 | 10 Pcs |

GET 360° Safety



A STEP **TOWARDS**
PERFECTION

C-CURVE



The Sophisticated & Ingenious come home

sophisticated brings consistency with a contemporary creative form.
The prominent and distinguished design character brings fine
details to the contemporary world.

PENTA

MODULAR SERIES



| CODE | DESCRIPTION | MRP | PKG |
|------|-------------|-----|-----|
|------|-------------|-----|-----|

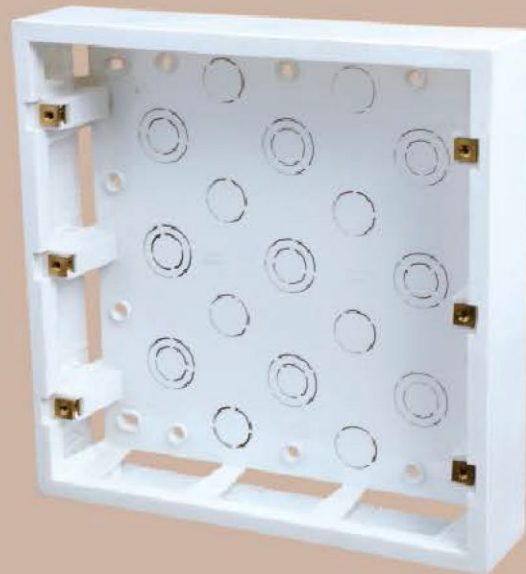
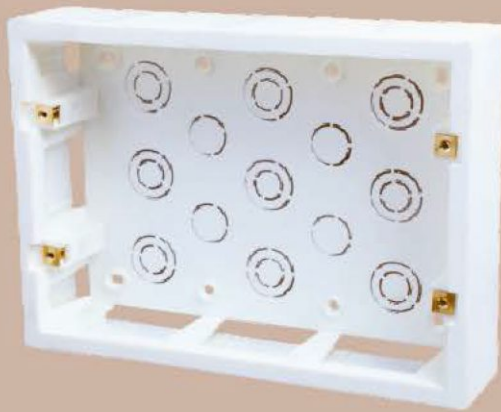
TINY SCREW MCB

| | | | |
|--------|----------------------|--------|----|
| RA-291 | 6A. SINGLE POLE MCB | 183.33 | 10 |
| RA-292 | 10A. SINGLE POLE MCB | 183.33 | 10 |
| RA-293 | 16A. SINGLE POLE MCB | 183.33 | 10 |
| RA-294 | 20A. SINGLE POLE MCB | 183.33 | 10 |
| RA-295 | 25A. SINGLE POLE MCB | 183.33 | 10 |
| RA-296 | 32A. SINGLE POLE MCB | 183.33 | 10 |
| RA-297 | 10A. DOUBLE POLE MCB | 350.00 | 10 |
| RA-298 | 16A. DOUBLE POLE MCB | 350.00 | 10 |
| RA-299 | 20A. DOUBLE POLE MCB | 350.00 | 10 |
| RA-300 | 25A. DOUBLE POLE MCB | 350.00 | 10 |
| RA-301 | 32A. DOUBLE POLE MCB | 350.00 | 10 |



MCB TRIPER SP / DP "C CURVE"

| | | | |
|--------|----------------------|--------|----|
| RA-302 | 6A. SINGLE POLE MCB | 216.67 | 12 |
| RA-303 | 10A. SINGLE POLE MCB | 216.67 | 12 |
| RA-304 | 16A. SINGLE POLE MCB | 216.67 | 12 |
| RA-305 | 20A. SINGLE POLE MCB | 216.67 | 12 |
| RA-306 | 25A. SINGLE POLE MCB | 216.67 | 12 |
| RA-307 | 32A. SINGLE POLE MCB | 216.67 | 12 |
| RA-308 | 10A. DOUBLE POLE MCB | 400.00 | 12 |
| RA-309 | 16A. DOUBLE POLE MCB | 400.00 | 12 |
| RA-310 | 20A. DOUBLE POLE MCB | 400.00 | 12 |
| RA-311 | 25A. DOUBLE POLE MCB | 400.00 | 12 |
| RA-312 | 32A. DOUBLE POLE MCB | 400.00 | 12 |



| CODE | OPEN SURFACE BOX | FANCY | PKG |
|--------|------------------|--------|--------|
| RA-313 | 1 & 2 MODULE | 59.17 | 20 Pcs |
| RA-314 | 3 MODULE | 69.00 | 20 Pcs |
| RA-315 | 4 MODULE | 77.33 | 20 Pcs |
| RA-316 | 6 MODULE | 89.50 | 10 Pcs |
| RA-317 | 8 MODULE SQ. | 116.33 | 10 Pcs |
| RA-318 | 8 MODULE HZ. | 119.33 | 10 Pcs |
| RA-319 | 12 MODULE | 147.00 | 10 Pcs |
| RA-320 | 16 MODULE | 181.17 | 05 Pcs |
| RA-321 | 18 MODULE | 190.00 | 05 Pcs |



| CODE | OPEN SURFACE BOX | REGULAR | PKG |
|--------|------------------|---------|--------|
| RA-322 | 1 & 2 MODULE | 44.67 | 20 Pcs |
| RA-323 | 3 MODULE | 50.67 | 20 Pcs |
| RA-324 | 4 MODULE | 59.33 | 20 Pcs |
| RA-325 | 6 MODULE | 86.00 | 10 Pcs |
| RA-326 | 8 MODULE SQ. | 108.00 | 10 Pcs |
| RA-327 | 8 MODULE HZ. | 104.67 | 10 Pcs |
| RA-328 | 12 MODULE | 131.67 | 10 Pcs |
| RA-330 | 18 MODULE | 161.67 | 05 Pcs |



MODULAR METAL CONCEALED BOX

Strong double walled design

Suitable for Surface or Concealed application

All holes clearly embossed with pitch dimension

Long life

PENTA

MODULAR SERIES



| CODE | DESCRIPTION | MRP | PKG |
|-----------------------------|--------------|--------|--------|
| ORANGE CONCEALED BOX | | | |
| RA-331 | 1 & 2 MODULE | 61.00 | 20 Pcs |
| RA-332 | 3 MODULE | 71.33 | 20 Pcs |
| RA-333 | 4 MODULE | 82.67 | 20 Pcs |
| RA-334 | 6 MODULE | 96.67 | 10 Pcs |
| RA-335 | 8 MODULE SQ. | 126.67 | 10 Pcs |
| RA-336 | 8 MODULE HZ. | 123.33 | 10 Pcs |
| RA-337 | 12 MODULE | 150.00 | 10 Pcs |
| RA-338 | 18 MODULE | 210.00 | 05 Pcs |



| CODE | DESCRIPTION | MRP | PKG |
|----------------------------------|--------------|--------|--------|
| HEAVY CONCEALED METAL BOX | | | |
| RA-339 | 1 & 2 MODULE | 72.84 | 20 Pcs |
| RA-340 | 3 MODULE | 88.18 | 20 Pcs |
| RA-341 | 4 MODULE | 107.34 | 10 Pcs |
| RA-342 | 6 MODULE | 143.83 | 05 Pcs |
| RA-343 | 8 MODULE SQ. | 164.84 | 05 Pcs |
| RA-344 | 8 MODULE HZ. | 164.84 | 05 Pcs |
| RA-345 | 12 MODULE | 205.00 | 05 Pcs |
| RA-346 | 16 MODULE | 00.00 | 05 Pcs |
| RA-347 | 18 MODULE | 280.00 | 05 Pcs |



| CODE | DESCRIPTION | MRP | PKG |
|-----------------|--------------------|-------|--------|
| GANG BOX | | | |
| RA-348 | 1WAY GANG BOX | 29.33 | 20 Pcs |
| RA-349 | 2WAY GANG BOX | 35.33 | 20 Pcs |
| RA-350 | 3WAY GANG BOX | 43.33 | 20 Pcs |
| RA-351 | 4WAY GANG BOX | 58.67 | 10 Pcs |
| RA-352 | 5WAY GANG BOX | 63.67 | 10 Pcs |
| RA-353 | 6WAY GANG BOX | 70.33 | 10 Pcs |
| RA-354 | 7 & 8 WAY GANG BOX | 93.00 | 10 Pcs |



Gold
asianplus
We take care



Creativity
meets Living



Experience
a perfect
world



PENTA

MODULAR SERIES



| CODE | DESCRIPTION | MRP | PKG |
|------|-------------|-----|-----|
|------|-------------|-----|-----|

FANCY GANG BOX

| | | | |
|--------|-------------------------|--------|--------|
| RA-355 | 1 WAY FANCY GANG BOX | 43.33 | 10 Pcs |
| RA-356 | 2 WAY FANCY GANG BOX | 54.17 | 10 Pcs |
| RA-357 | 3 WAY FANCY GANG BOX | 57.50 | 10 Pcs |
| RA-358 | 4 WAY FANCY GANG BOX | 71.33 | 10 Pcs |
| RA-359 | 5 WAY FANCY GANG BOX | 74.33 | 10 Pcs |
| RA-360 | 6 WAY FANCY GANG BOX | 83.00 | 10 Pcs |
| RA-362 | 7 WAY FANCY GANG BOX | 95.43 | 10 Pcs |
| RA-363 | 8 Sq WAY FANCY GANG BOX | 134.67 | 05 Pcs |
| RA-364 | 10 WAY FANCY GANG BOX | 142.50 | 05 Pcs |
| RA-365 | 12Sq WAY FANCY GANG BOX | 169.67 | 05 Pcs |

CUTTING BOARD

| | | | |
|--------|---------------------|--------|--------|
| RA-366 | 1 WAY POWER BOARD | 61.67 | 10 Pcs |
| RA-367 | 7X4 CUTTING BOARD | 82.83 | 10 Pcs |
| RA-368 | 2 WAY POWER BOARD | 82.83 | 10 Pcs |
| RA-369 | 8X6 CUTTING BOARD | 131.53 | 05 Pcs |
| RA-370 | 8X6 PLAIN BOX | 131.53 | 05 Pcs |
| RA-371 | 8X10 CUTTING BOARD | 216.50 | 05 Pcs |
| RA-372 | 8X10 PLAIN BOX | 216.50 | 05 Pcs |
| RA-373 | 10X12 CUTTING BOARD | 277.97 | 05 Pcs |
| RA-373 | 10X12 PLAIN BOARD | 277.97 | 05 Pcs |

SPIKE GUARD / FLEX BOX

| | | | |
|--------|---------------------------|--------|--------|
| RA-374 | 4X1 SPIKE GUARD 1.25 MTR. | 383.33 | 01 Pcs |
| RA-375 | 4X1 SPIKE GUARD 2 MTR. | 433.33 | 01 Pcs |
| RA-376 | 4X1 SPIKE GUARD 4 MTR. | 533.33 | 01 Pcs |
| RA-300 | HEAVY 2 MTR. SPIKE GUARD | 500.00 | 05 Pcs |
| RA-300 | HEAVY 4 MTR. SPIKE GUARD | 566.67 | 05 Pcs |
| RA-300 | 2X4 FLEX BOX - SQUIRE | 433.33 | 05 Pcs |
| RA-378 | 2X8 FLEX BOX - SQUIRE | 533.33 | 05 Pcs |
| RA-379 | 3X4 FLEX BOX - SQUIRE | 600.00 | 05 Pcs |

SURFACE MODULAR GANGE BOX (REGULAR / SILVER / BRASS)



SURFACE MODULAR GANGE BOX ABS

| CODE | ITEM (ABS) | MRP. | PKG |
|--------|--------------|--------|--------|
| RA-380 | 1 MODULE | 48.67 | 20 Pcs |
| RA-381 | 2 MODULE | 59.57 | 20 Pcs |
| RA-382 | 3 MODULE | 71.20 | 20 Pcs |
| RA-383 | 4 MODULE | 89.37 | 20 Pcs |
| RA-384 | 6 MODULE | 113.33 | 10 Pcs |
| RA-385 | 8 MODULE SQ. | 130.07 | 10 Pcs |
| RA-386 | 8 MODULE HZ | 134.27 | 10 Pcs |
| RA-387 | 9 MODULE | 134.27 | 10 Pcs |
| RA-388 | 12 MODULE | 165.67 | 10 Pcs |
| RA-389 | 16 MODULE | 205.80 | 05 Pcs |
| RA-390 | 18 MODULE | 226.60 | 05 Pcs |

SURFACE MODULAR GANGE BOX HIP

| CODE | ITEM (HIP) | MRP. | PKG |
|--------|--------------|--------|--------|
| RA-391 | 1 MODULE | 43.34 | 20 Pcs |
| RA-392 | 2 MODULE | 44.34 | 20 Pcs |
| RA-393 | 3 MODULE | 65.00 | 20 Pcs |
| RA-394 | 4 MODULE | 81.17 | 20 Pcs |
| RA-395 | 6 MODULE | 103.34 | 10 Pcs |
| RA-396 | 8 MODULE SQ. | 119.00 | 10 Pcs |
| RA-397 | 8 MODULE HZ | 119.00 | 10 Pcs |
| RA-398 | 9 MODULE | 126.67 | 10 Pcs |
| RA-399 | 12 MODULE | 145.34 | 10 Pcs |
| RA-400 | 16 MODULE | 187.00 | 05 Pcs |
| RA-401 | 18 MODULE | 205.67 | 05 Pcs |

SURFACE MODULAR GANGE BOX BRASS

| CODE | ITEM (BRASS) | MRP. | PKG |
|--------|--------------|--------|--------|
| RA-402 | 1 MODULE | 64.00 | 20 Pcs |
| RA-403 | 2 MODULE | 73.00 | 20 Pcs |
| RA-404 | 3 MODULE | 78.00 | 20 Pcs |
| RA-405 | 4 MODULE | 90.33 | 20 Pcs |
| RA-406 | 6 MODULE | 114.00 | 10 Pcs |
| RA-407 | 8 MODULE SQ. | 133.33 | 10 Pcs |
| RA-408 | 8 MODULE HZ | 137.66 | 10 Pcs |
| RA-409 | 9 MODULE | 00.00 | 10 Pcs |
| RA-410 | 12 MODULE | 196.00 | 10 Pcs |
| RA-411 | 16 MODULE | 00.00 | 05 Pcs |
| RA-412 | 18 MODULE | 281.33 | 05 Pcs |

Gold
asianplus

Next
Generation
Innovation
Take on Classic
Interiors



Quality Comes First

When you choose a asianplus product, You select unmatched international quality.

That's because we use technologically advanced manufacturing processes at our state - of the art plant. To bring you a wide range of products that excel in quality and design.





Legend Series for Luxury Homes



Gold
asianplus
We take care

asianplus electricals pvt. ltd.
AN ISO 9001-2015 CERTIFIED COMPANY



Fact.1: Zone D-57, Five Star MIDC Kagal- Hatkanangale (MS) 4162036
Unit 2 : Richard Compound, Vasai (East), Mumbai, Palghar (MS) 401208
Email : asianpluselectric5555@gmail.com www.asianpluselectricals.com
Customer Care : +91 9040022001, +91 9881517779, +91 7665777171

AN ISO 9001-2015
CERTIFIED COMPANY

